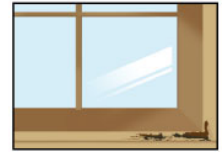
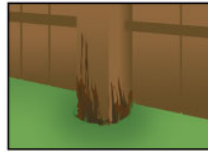


# DRIVE Marine Services

Available at  
AJ Woodall  
Shipwright &  
Legacy Nautical

## PREVENT STOP REPAIR **ROT**

Got a rot Problem?  
We have the solution!



### TIMBER PRESERVER

Timber Preserver gives timber protection against fungal degrade and some species of woodborers.



#### AUSSIE CLEAR EXTERIOR CLEAR OIL FINISH

AUSSIE CLEAR is an oil based Exterior Timber Finish that protects hardwoods from the weather. Its penetrative quality allows the enhancement of the natural grain and beauty resulting in a natural oiled look.



NO-ROT is a unique solid wood preservative used for the internal treatment of timber. It will stop and prevent rot and white ant attack.



No-Rot Gel is a ready to use, water based brush on wood preservative, to control the spread of decay.



ROTFIX is a mixture of glycol and salts of boron. It is able to readily diffuse into moist timber and is the ideal way to stop Rot until the timber can be dried properly to carry out a permanent repair.



The WOT ROT KIT was developed by DRIVE Marine Services to undertake rot repairs. In most cases it contains everything you need to repair & eliminate rot. If you go through it all for a large application, you will have a good idea of what you will require to finish the job. It is based on the Bote-Cote epoxy system.

#### Restore Timber

#### GREY DECK CLEANER

GREY DECK CLEANER is a powerful wood cleaner, ideal for cleaning grey or blackened timber caused by weathering.

*For a Comprehensive Range of Boat Building Products including*

**Bote Cote** Epoxies, Fillers, **Pour-on-Gloss** Decoupage Coating, **COP-R-BOTE** Epoxy Antifouling, **AQUACOTE** Polyurethane Coatings, **PURBOND** Waterproof Single Pack Glue, **TREDGRIP** Rubberised non-slip Paint, Glass & Carbon **Reinforcing Fabrics**, **FERONITE** Rust converter and Primer, Marine, Proof & Aircraft **Plywoods**, **NIDAPLAST** Composites, **S/S & Bronze** Fasteners **DAVEY** Traditional Bronze & Marine Fittings

**AVAILABLE AT : AJ WOODALL SHIPWRIGHT & LEGACY NAUTICAL – BIBRA LAKE**  
**AVAILABLE ON LINE AT** [www.legacynautical.com.au](http://www.legacynautical.com.au) | P 08 9418 4402 | E [sales@ajwshipwright.com.au](mailto:sales@ajwshipwright.com.au)

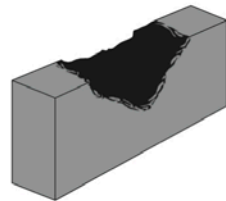
# WOT ROT™

## Rot Repair Kit & System

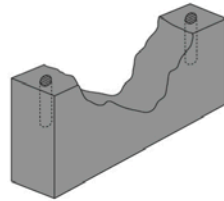
with



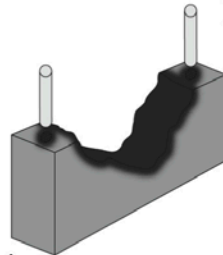
Due to government regulations  
NO ROT sticks are sold separately



**1.** Cut-away rot from, the rotting beam, window sill or other timber component.

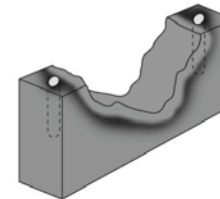
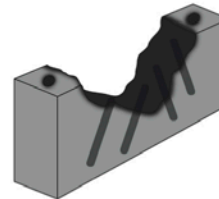


**2.** Rotten/ Decayed material removed. Holes drilled at least 20mm from rotten area for NO ROT sticks.

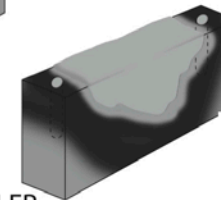


**3.** Insert NO ROT sticks into drilled holes, using instruction on pack.

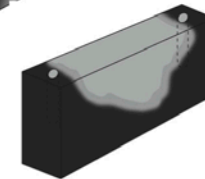
**4.** Using a screwdriver or awl (4-6mm), punch holes to solid timber, 20mm to 25mm apart at approx 45 degree angle. Fill holes with BOTE-COTE and TPRDA solution, repeat until the holes remain full.



**5.** Using BOTE-COTE with TPRDA added wet out to the surface of the cavity until the surface remains wet.



**6.** Overfill cavity with BOTE-COTE mixed with GLUE & FILLETING FILLER.  
NOTE: SANDING FILLER can be used if not structural



**7.** Sand cured BOTE-COTE with GLUE & FILLETING FILLER flush, then paint.

Detailed instructions supplied with **WOT ROT™** kit



**MADE IN AUSTRALIA**  
FOR AUSTRALIAN CONDITIONS

© DRIVE MARINE SERVICES, 2014

*For a Comprehensive Range of Boat Building Products including*

**Bote Cote** Epoxies, Fillers, **Pour-on-Gloss** Decoupage Coating, **COP-R-BOTE** Epoxy Antifouling, **AQUACOTE** Polyurethane Coatings, **PURBOND** Waterproof Single Pack Glue, **TREDGRIP** Rubberised non-slip Paint, Glass & Carbon **Reinforcing Fabrics**, **FERONITE** Rust converter and Primer, Marine, Proof & Aircraft **Plywoods**, **NIDAPLAST** Composites, **S/S & Bronze** Fasteners **DAVEY** Traditional Bronze & Marine Fittings

**AVAILABLE AT : AJ WOODALL SHIPWRIGHT & LEGACY NAUTICAL – BIBRA LAKE**  
**AVAILABLE ON LINE AT** [www.legacynautical.com.au](http://www.legacynautical.com.au) | P 08 9418 4402 | E [sales@ajwshipwright.com.au](mailto:sales@ajwshipwright.com.au)